

The Good Samaritan Foundation Village

Loburo, Nigeria



COULL
Architecture



Who we are

The Good Samaritan Foundation

Our mission

The Good Samaritan Foundation (TGSF) implements projects, programmes and activities aimed at augmenting and improving personal, social and psychological development needs of our youths to enable them realise their potential as they journey into adulthood.

Our purpose

We aim to advance the social and psychological life of young people mainly through crisis intervention, advocacy, motivational interactions and leisure time activities in order to develop their mental, physical and spiritual capacities so they can achieve their full potential as responsible individual and members of society.

Our vision

The vision for The Good Samaritan Foundation is to work in partnership with vulnerable children and young people, aged 12-24 years old, and their parents, to improve their personal, psychological and social development needs through targeted projects and programmes.

Achievements

In the last eight years, The Good Samaritan Foundation has succeeded in serving as voice to the voiceless. Counsellor Funmi Ademilua has been able to access places almost impossible for the downtrodden to reach in rallying support for the socially, psychologically and economically defenceless youths. TGSF covered young people's social and educational needs by providing life skills and professional development through motivational interactions, advocacy and youth involvement activities majorly in the United Kingdom and Nigeria. Over a number of years, The Good Samaritan Foundation has provided educational, psychological and financial supports both in the UK and Nigeria worth thousands of pounds in donated sum both in cash and in kind.

Coull Architecture

Profile

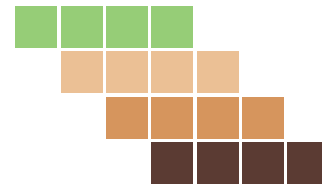
Coull Architecture are a service focused, design driven architecture company based in London. It is our aim to understand the needs and aspirations of the client, to provide them with a comprehensive, honest and professional service. We apply that understanding to our analysis of each site to prepare a responsive, responsible and robust project brief from which a contextual, engaging design is conceptualised and developed. We are a team that seek to focus on the service we provide and the ideas we contribute as Architects.

Involvement

Coull Architecture were approached by Counsellor Funmi Ademilua of The Good Samaritan Foundation to explore the potential of a fantastic site in the outskirts of Loburo. TGSF have a brilliant vision to provide a youth-driven community village that provides essential education, religious, health, work and communal facilities.

We developed a concept design for TGSF to show how all these activities could be brought together on one site in a dynamic arrangement in response to the culture and climate of Loburo with a focus on local materials and construction technologies.

Along with Arups Nigeria and Costworth Associates we brought together this presentation to demonstrate the strength, vision and viability of this project and look forward to our continued involvement and see a purposeful development bring opportunity to a local community.



Location

Nigeria

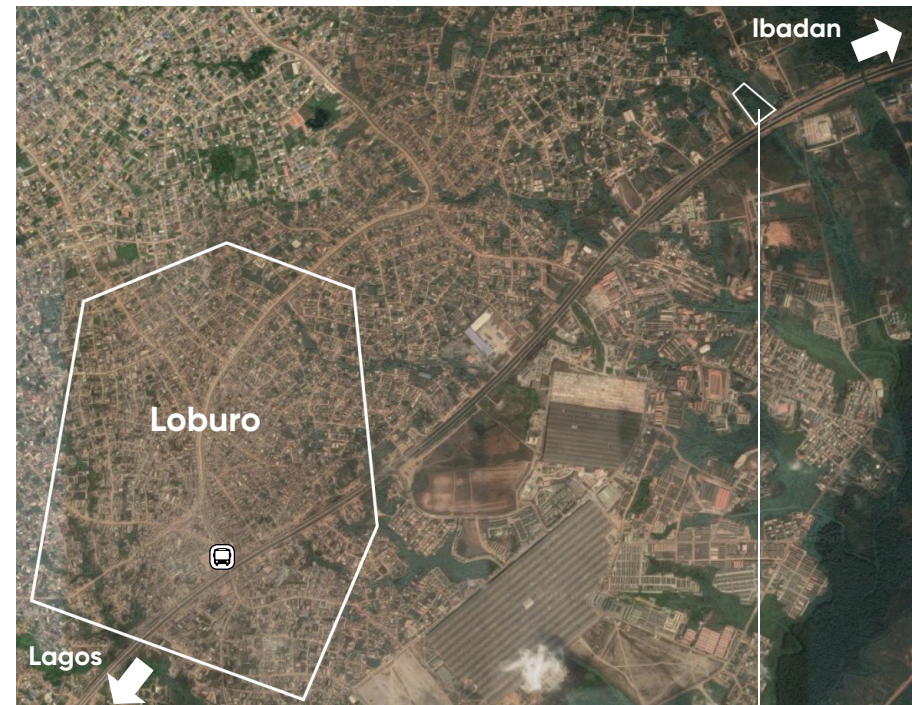
Recently, with over 87 million people living below US\$1.9 per day in Nigeria, the country has emerged as the country with the highest number of poor people in the world, overtaking India. According to a report by the Brookings Institution, data from the World Poverty Clock show that Nigeria now has over 87 million people living in extreme poverty. This number represents almost 50% of Nigeria's population.



Loburo

Loburo, is one of the several communities in Obafemi Owode local government area in Ogun State of Nigeria. Obafemi Owode local government area, seated on a 1,410km square expanse of land, houses a population of 228,851 people (2006 census). Therefore, given the large population of those living in extreme poverty in Nigeria especially the unemployed youths, and millions of those who may have suffered job losses in the last three years, TGSF has decided to set up the vocational centre at Loburo.

The site



Site location:

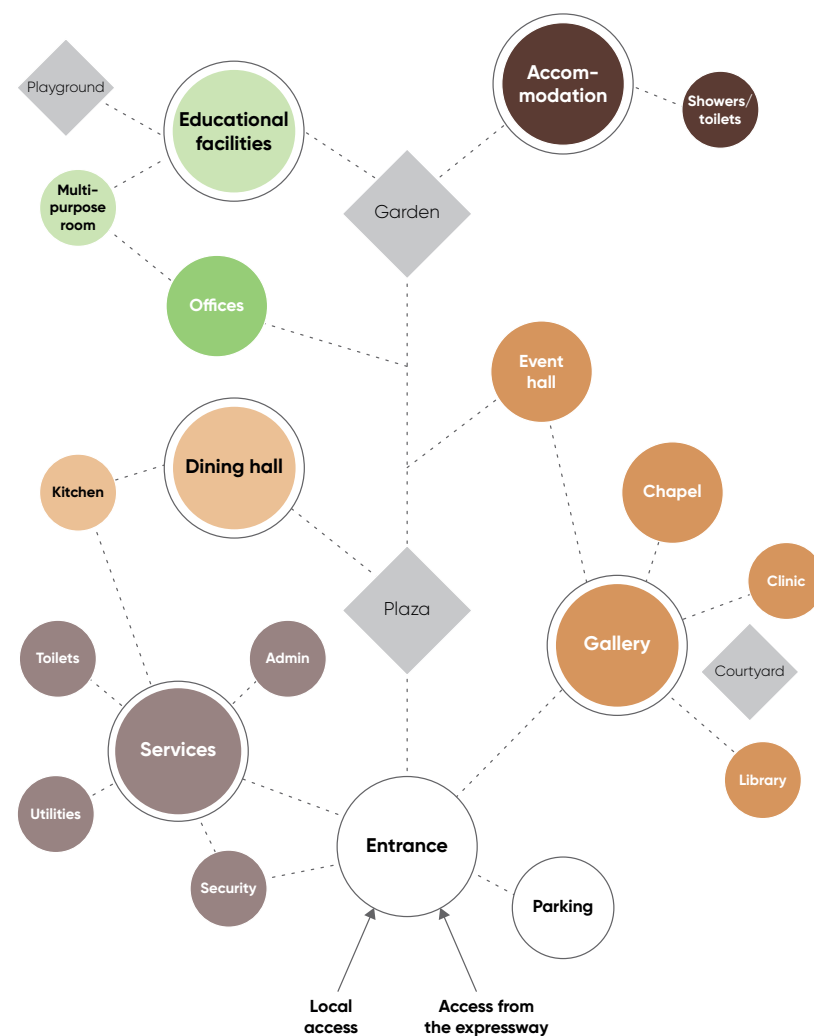
Along Lagos/Ibadan Expressway, near Youth Camp Loburo
Obafemi/Owode Local Government Area
Ogun State, Nigeria

Project overview

The Good Samaritan Foundation has decided to establish a one-stop vocational and rehabilitation centre in Loburo, Ogun state of Nigeria, Western African continent. Loburo is located at kilometre 46, Lagos-Ibadan expressway, Ogun state. To jump start the project, TGSF has acquired more than 2 acres of land (about 13 plots of land) at Loburo.

The centre is meant to create skills acquisition venues, where beneficiaries or graduands of the scheme will have to be trained on various chosen vocation that will enable them not only to be financially independent but also employers of labour. The skills acquisition programme will specialize in the following trainings:

- | | |
|--|-----------------------------------|
| 1. Photography | 7. Cosmetics/makeover |
| 2. Fashion designing/tailoring | 8. Computer/internet appreciation |
| 3. Website design and development | 9. Barbing/hair-dressing skills |
| 4. Digital marketing/blogging | 10. Plumbing |
| 5. Farming/agro allied chain of businesses | 11. Tiling |
| 6. Catering services | 12. Aluminium Fabrication |



Benefits to the local community

Employment

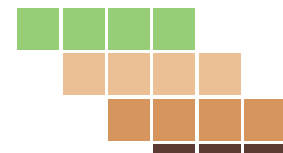
The latest Labour Statistics Report for the third quarter of the year 2018 by the National Bureau of Statistics revealed that the unemployment rate in Nigeria had increased from 18.8 percent in the third quarter of year 2017 to 23.1 percent. The report further stated that the number of persons in the labour force increased from 85.1 million in the third quarter of 2017 to 90.5 million in the third quarter of 2018.

Opportunities during construction

Capacity building is valuable and important because of its both short-term and any long-term impacts. For example, this project will absorb 100-150 skilled and semi-skilled workers which will have direct impact on capacity building. This is a valuable and important index on short and long-term socio-economic reconstruction systems of the country.

Diverse opportunities after completion

- Sense of ownership and empowerment, so that the community gain greater control over their own future development
- Strengthened youth confidence, skills, knowledge, and resources
- Will be more effective and successful in addressing community issues
- Through diverse skills acquisition and mentorship, the communities will hugely benefit
- Through volunteering, more engripping potentials and on-the-job experience will be gained
- Graduate after-school finishing and counseling programs will boost employment



Benefits to the local community

Education and skills

Education is the bedrock of development, but unfortunately education in Nigeria is bisected with myriad problems. These include: poor funding and thus poor educational infrastructures; inadequate classrooms and teaching aids (projectors, computers, laboratories and libraries); paucity of quality teachers; and poor/polluted learning environments. Most especially a lack of skilled human resources.

Skills opportunity and financial engagement programme

- Within the first year of the commencement of the scheme, up to 10,000 people are targeted to have gone through the apprenticeship and financial engagement programme.
- Upon graduation from TGSF vocational centre, all the beneficiaries will help in reducing the poor population by being encouraged to transfer their experience of their chosen skills to others by also training apprentices.

General benefits to the area

The Good Samaritan Foundation Rehabilitation and Vocational Centre, Loburo intends to serve as a general human capital development and empowerment venue for teeming unemployed youths with Nigeria being the catchment area. However, the immediate beneficiaries will be the local communities, covering Loburo, Arepo, Shimawa, Mowe, Ibafo, Magboro, Ofada, with part of Lagos State residents along, Ikorodu, Ketu, Berger as well as Ikeja, being Lagos state capital. There shall be hostel facilities at the centre.



Benefits to the local community

Opportunities

Knowledge is the new currency

In the new world order, competence to fit in the ever dynamic work-space is vital so, KNOWLEDGE is a key to lifetime empowerment.

Key index focus

- Certify the trainees with Certificate of Competence for the labour market
- Right technical and vocational skills needed by the local industries are available in our Module

Opportunities for start-ups co-hub space

The proposed building is an annexe of activities that ensure total life mapping and empowerment, there is provision for co-work space where start ups can access necessary infrastructures that can enhance productivity such as internet and power.













Opportunities for mentorship

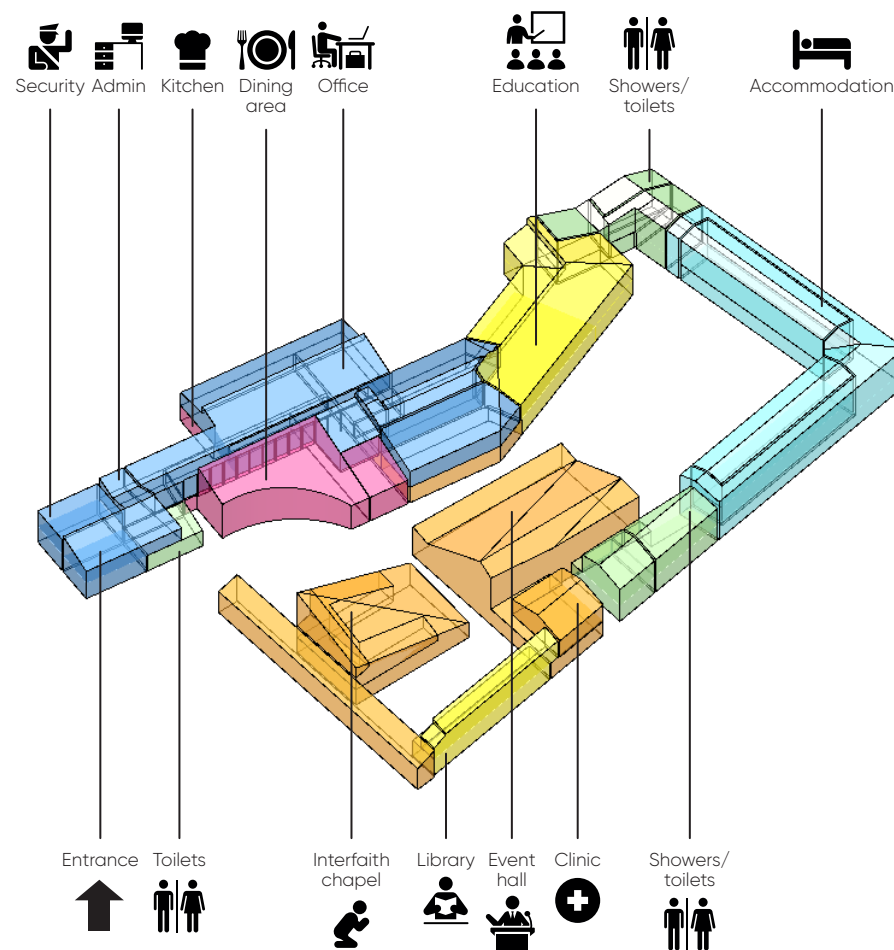
It has been proposed that in five years The Good Samaritan Foundation is projected to have graduated a minimum of 75,000 direct beneficiaries of the acquired skill training, while up to 750,000 indirect beneficiaries via transferred knowledge.

The transfer knowledge comes from the direct beneficiaries who train a minimum of 10 others in their chosen area of competences.



Facilities

	Vocational and administration		
	Office space for training / start-ups	120 people	500m2
	Administration offices	25-30 people	200m2
	Eating, dining and kitchen		
	Large dining area	180 people	275m2
	Smaller dining area in school	75 children and staff	100m2
	Large kitchen		125m2
	Educational facilities		
	Creche (up to 4 years)	30 children / 8 staff	300m2
	Primary School (4 - 12 years)	100 children / 8 staff	500m2
	Preparatory school (12 years and up)	150 children / 10 staff	500m2
	Recreational / youth centre	25-30 people	200m2
	Library (for use by wider community)	- people	150m2
	Community and communal facilities		
	Banquet / Event Hall	500 people	400m2
	Utilities and Storage	n/a	60m2
	Interfaith Chapel	350 people	250m2
	Gallery and tourist centre	n/a	100m2
	Clinic	n/a	175m2
	Multi-purpose room	up to 80 people	120m2
	Residences		
	Guest Rooms for visitors, volunteers and humanitarians	12 rooms	320m2
	Student accommodation	20 rooms	530m2
	Ancillary		
	Administration Offices	25-30 people	100m2
	Entrance Lobby		50m2
	Toilets and showers (male and female)		50m2
	Target of 75 parking spaces for visitors and staff		n/a
	Security		
	Perimeter walls with gated entrance point(s)		n/a
	Guard facilities (change, admin, etc.)		100m2
	Utilities		
	Generator room (positioning to account for noise pollution)		50m2
	Fresh water pump room		75m2
	Drainage to septic tank (no mains sewer available)		50m2

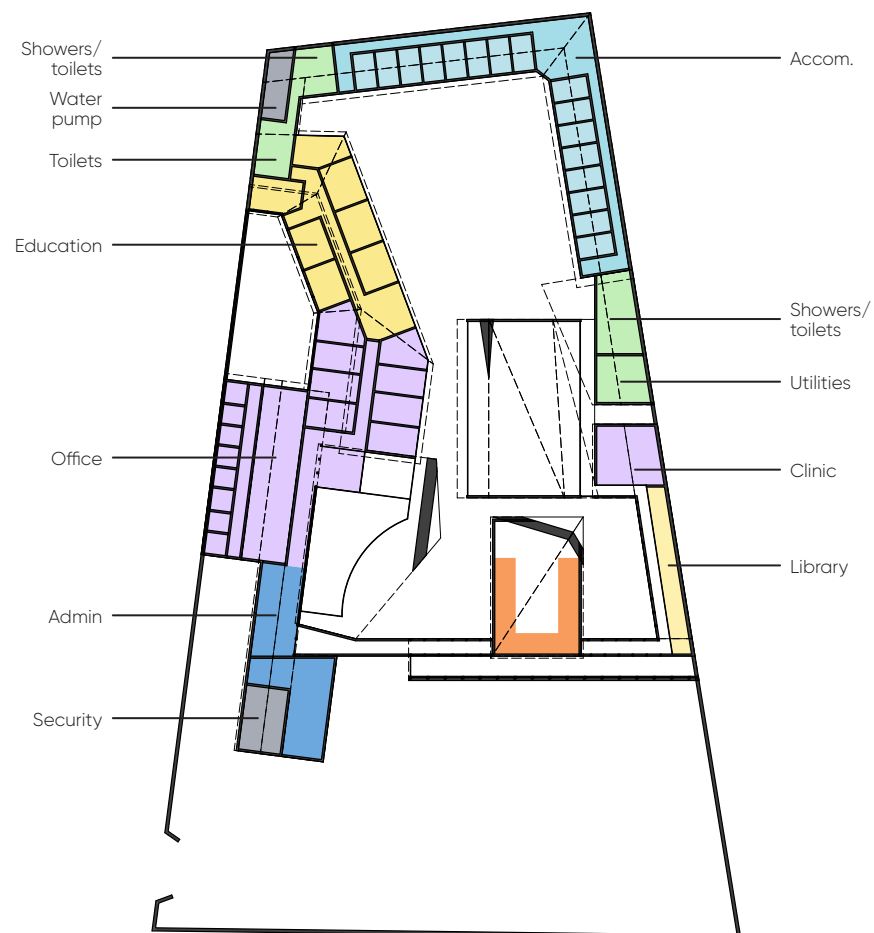


Plans

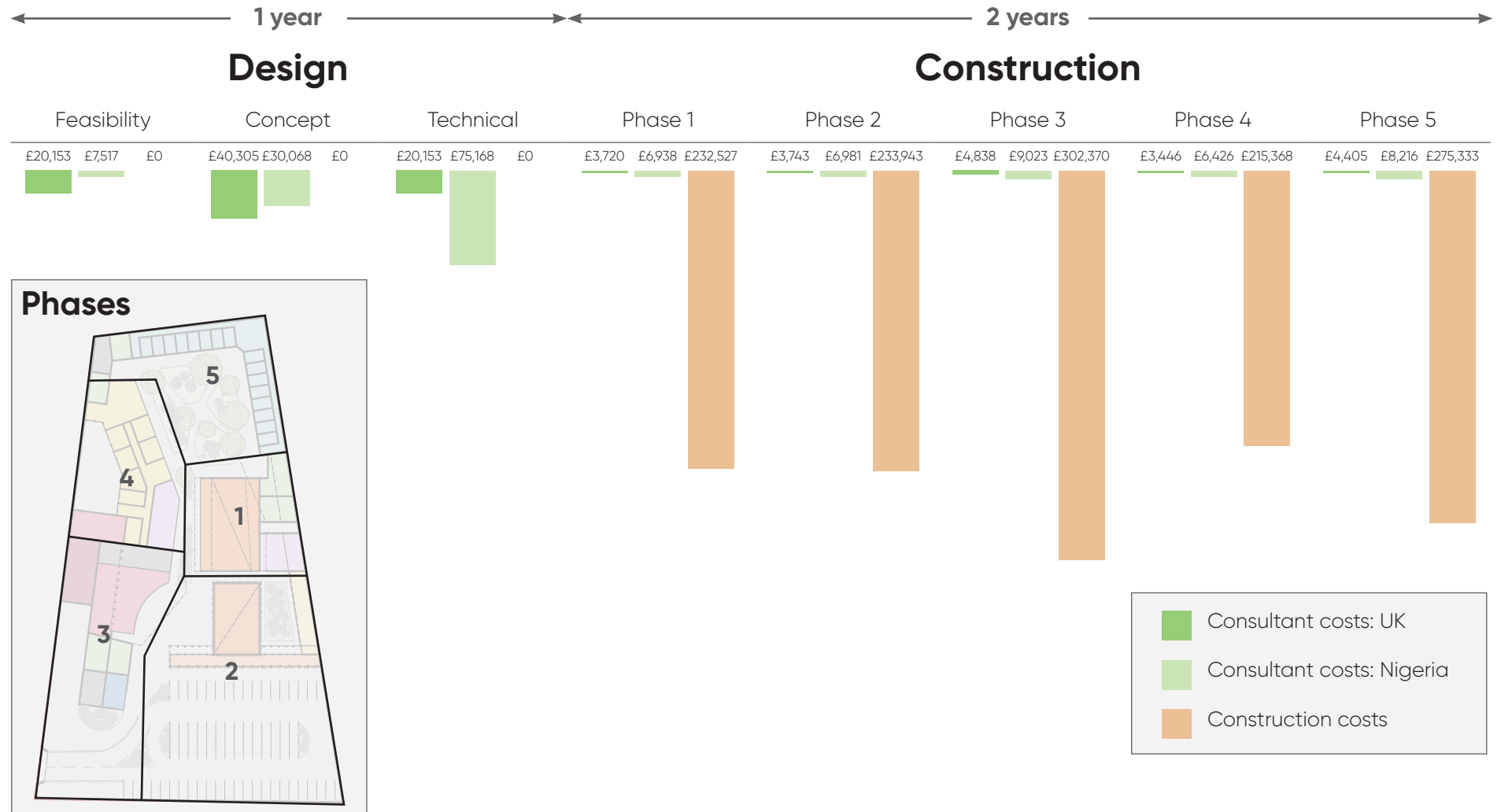
Ground level



First floor



Programme



Programme costs

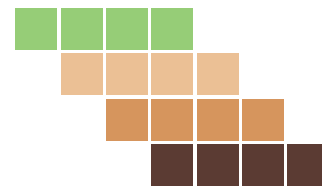
		Consultant costs: UK	% of UK consultant total	Consultant costs: Nigeria	% of Nigeria consultant total	Construction costs	% of total construction	Total	% of total costs
Design	Feasibility	NGN		3,397,981	5%			3,397,981	
		GBP	20,153	7,517				27,670	2%
	Concept	NGN		13,591,925	20%			13,591,925	
		GBP	40,305	30,068				70,373	5%
	Technical	NGN		33,979,812	50%			33,979,812	
		GBP	20,153	75,168				95,321	6%
Construction	Phase 1	NGN		3,136,549	5%	105,113,513	18%	108,250,062	
		GBP	3,720	6,938		232,527		243,186	16%
	Phase 2	NGN		3,155,654	5%	105,753,763	19%	108,909,417	
		GBP	3,743	6,981		233,943		244,667	16%
	Phase 3	NGN		4,078,657	6%	136,685,870	24%	140,764,527	
		GBP	4,838	9,023		302,370		316,230	21%
	Phase 4	NGN		2,905,090	4%	97,356,745	17%	100,261,835	
		GBP	3,446	6,426		215,368		225,240	15%
	Phase 5	NGN		3,713,955	5%	124,463,804	22%	128,177,759	
		GBP	4,405	8,216		275,333		287,954	19%
Total		NGN	0	67,959,624	100%	569,373,695	100%	637,333,319	
		GBP	100,763	150,337		1,259,541		1,510,641	100%

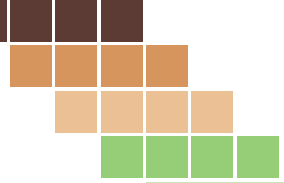


Visualisations



Aerial view from the highway





Visualisations

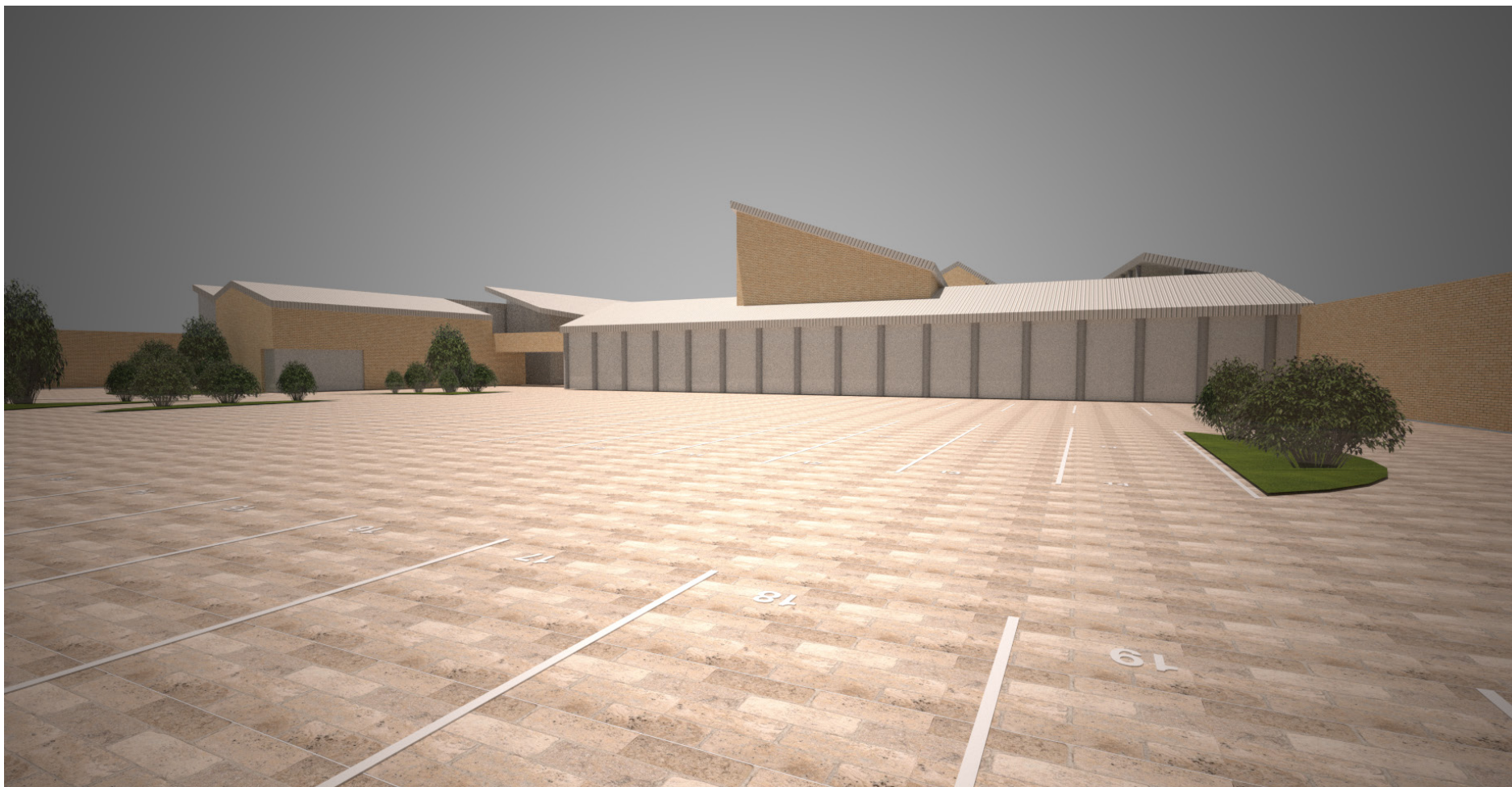


Entering the site

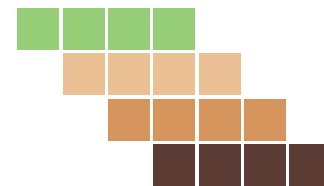




Visualisations

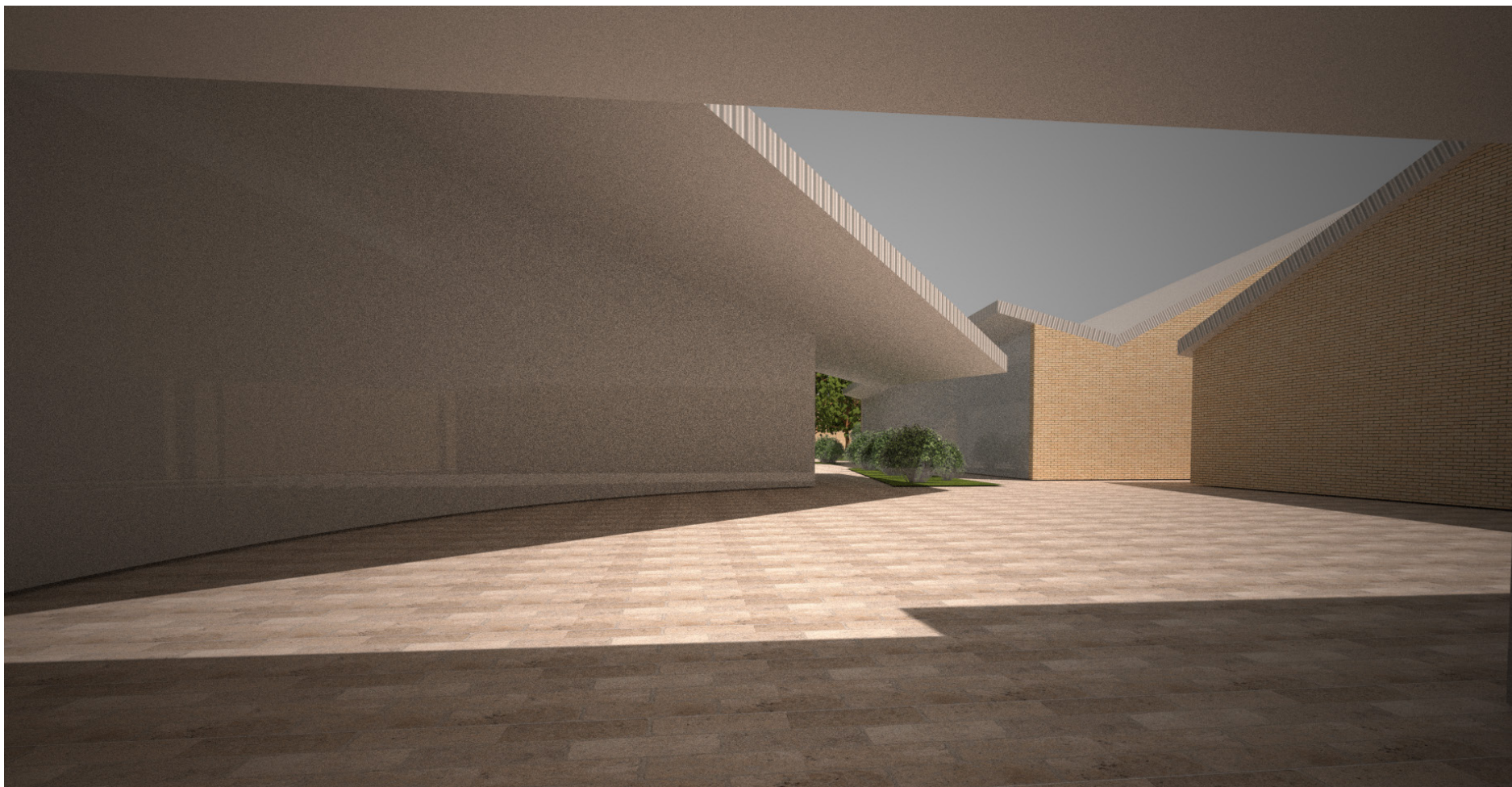


View of entrance from car park

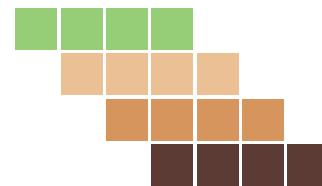


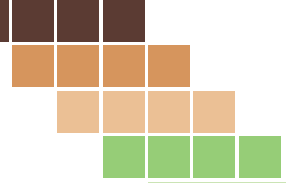


Visualisations



View of the plaza

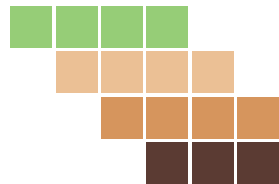


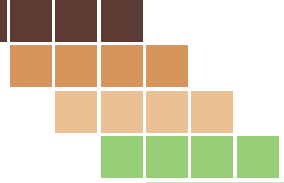


Visualisations



View of plaza and street from balcony over the entrance

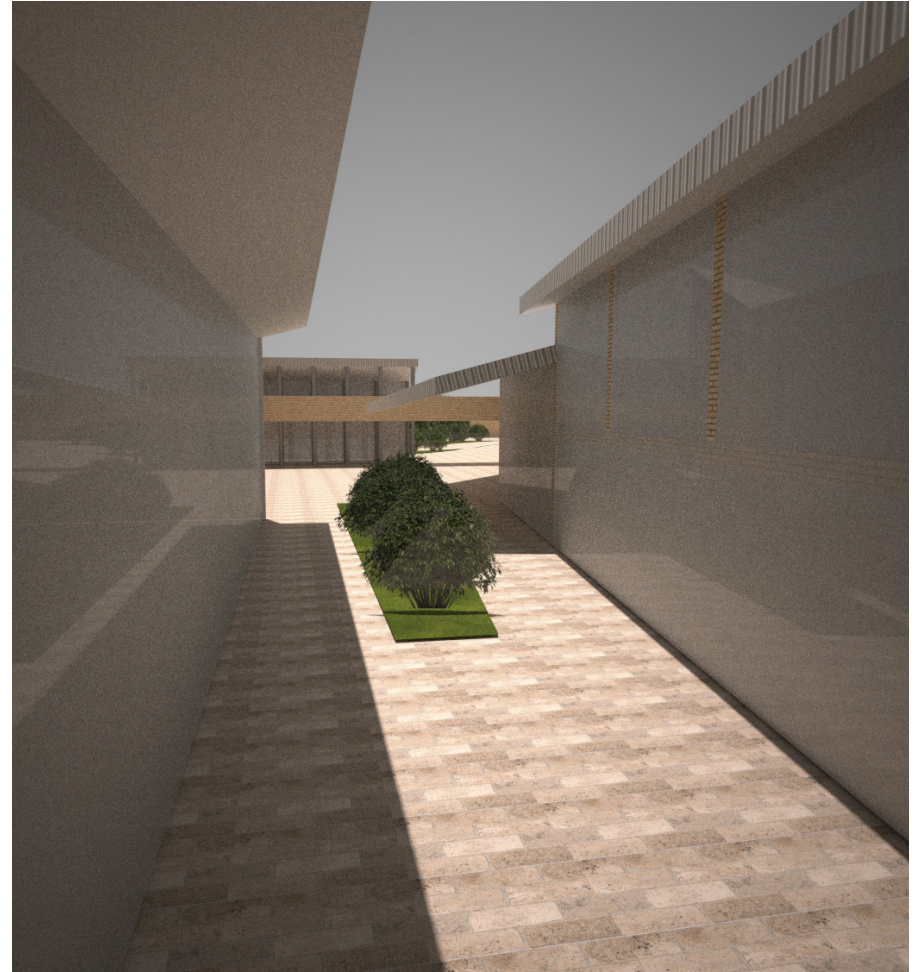




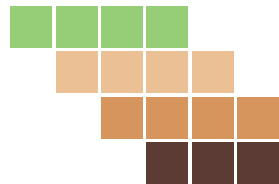
Visualisations

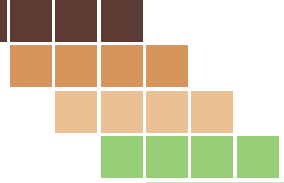


Looking up the street to the garden

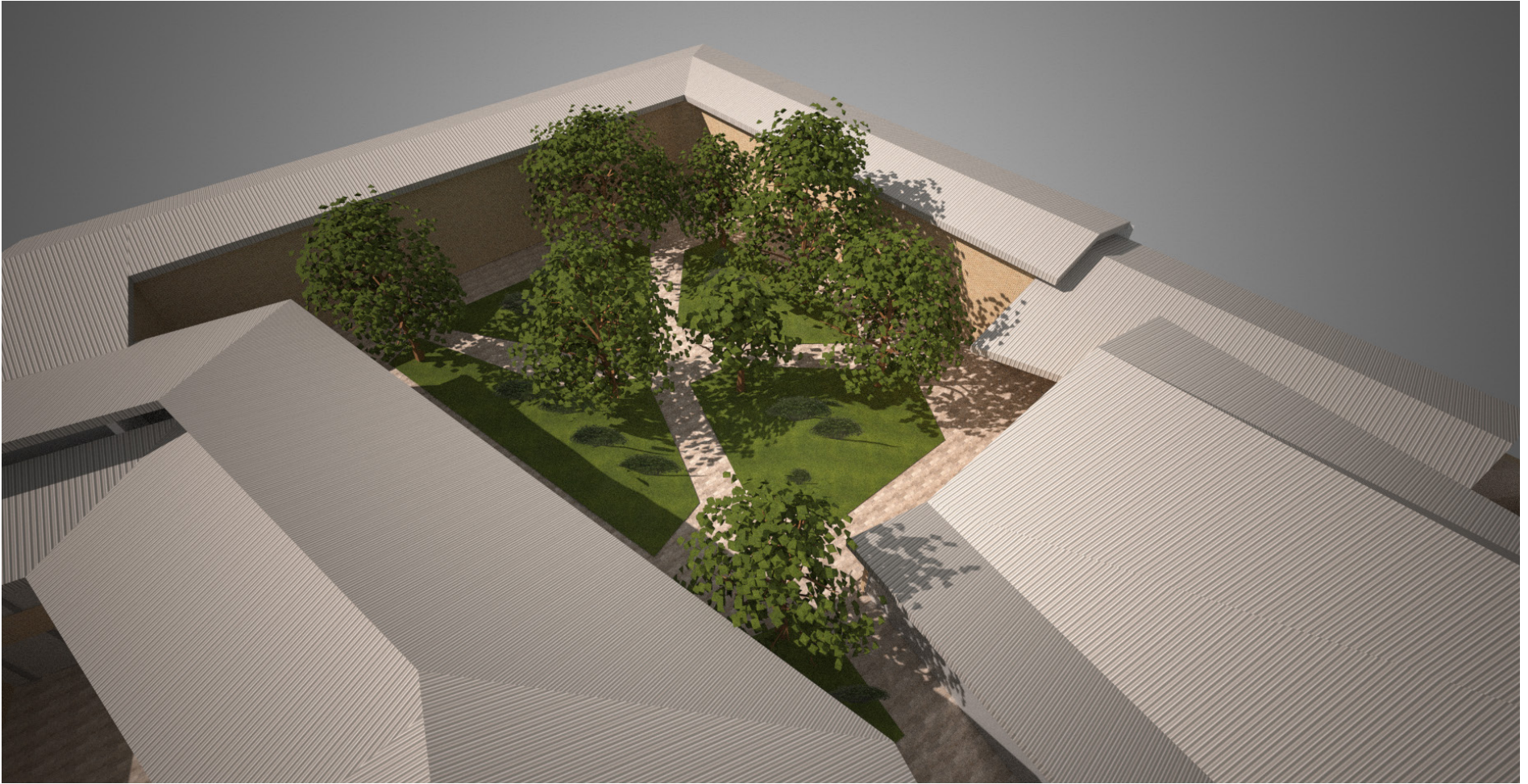


Looking down the street to the plaza

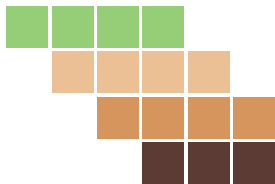


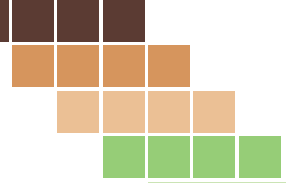


Visualisations

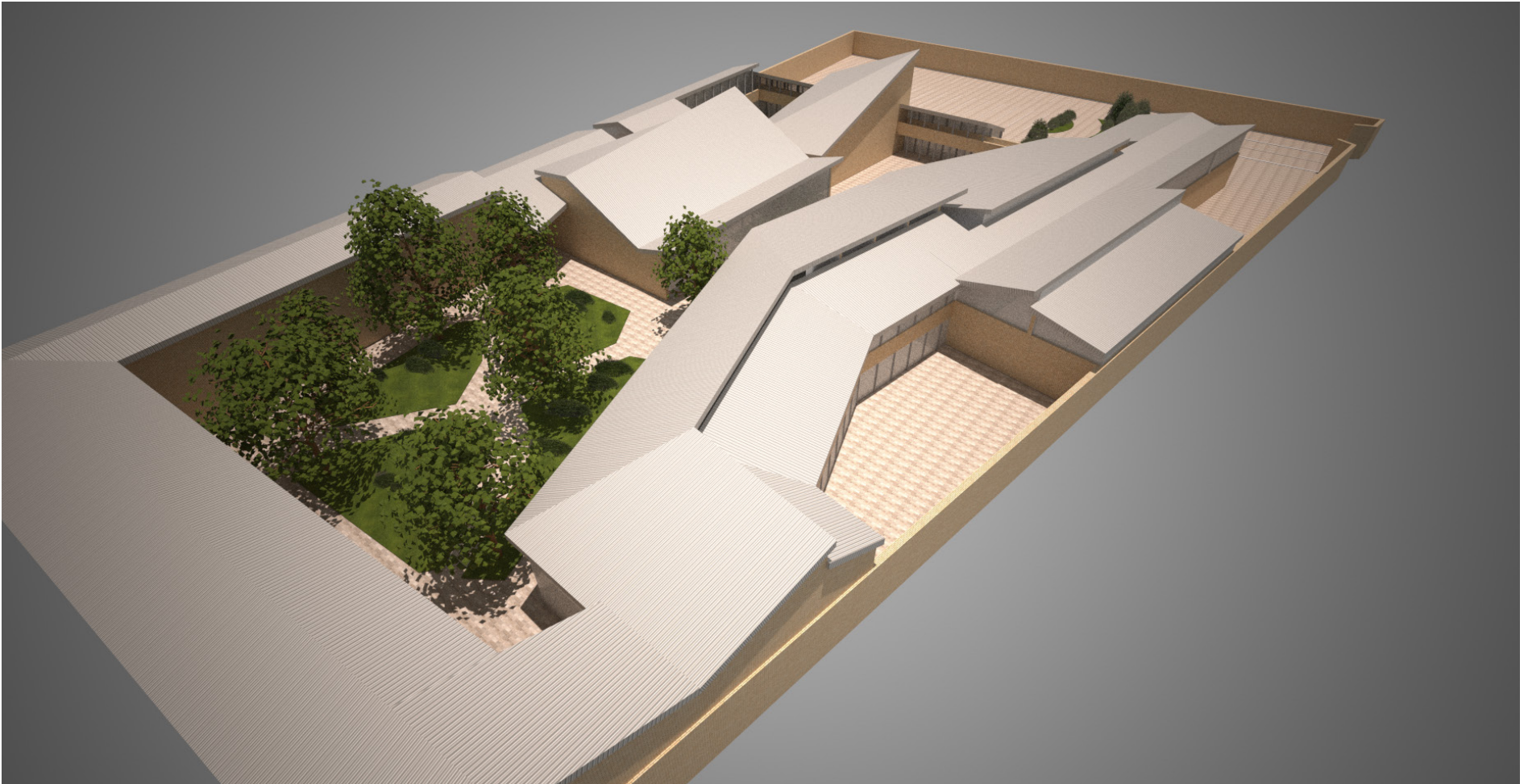


Aerial view of the garden

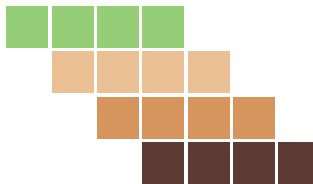


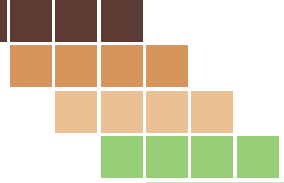


Visualisations



Aerial view from rear of site

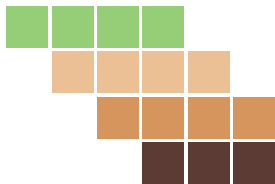


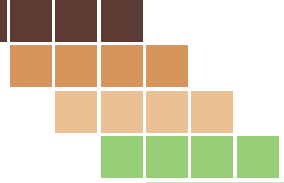


Visualisations

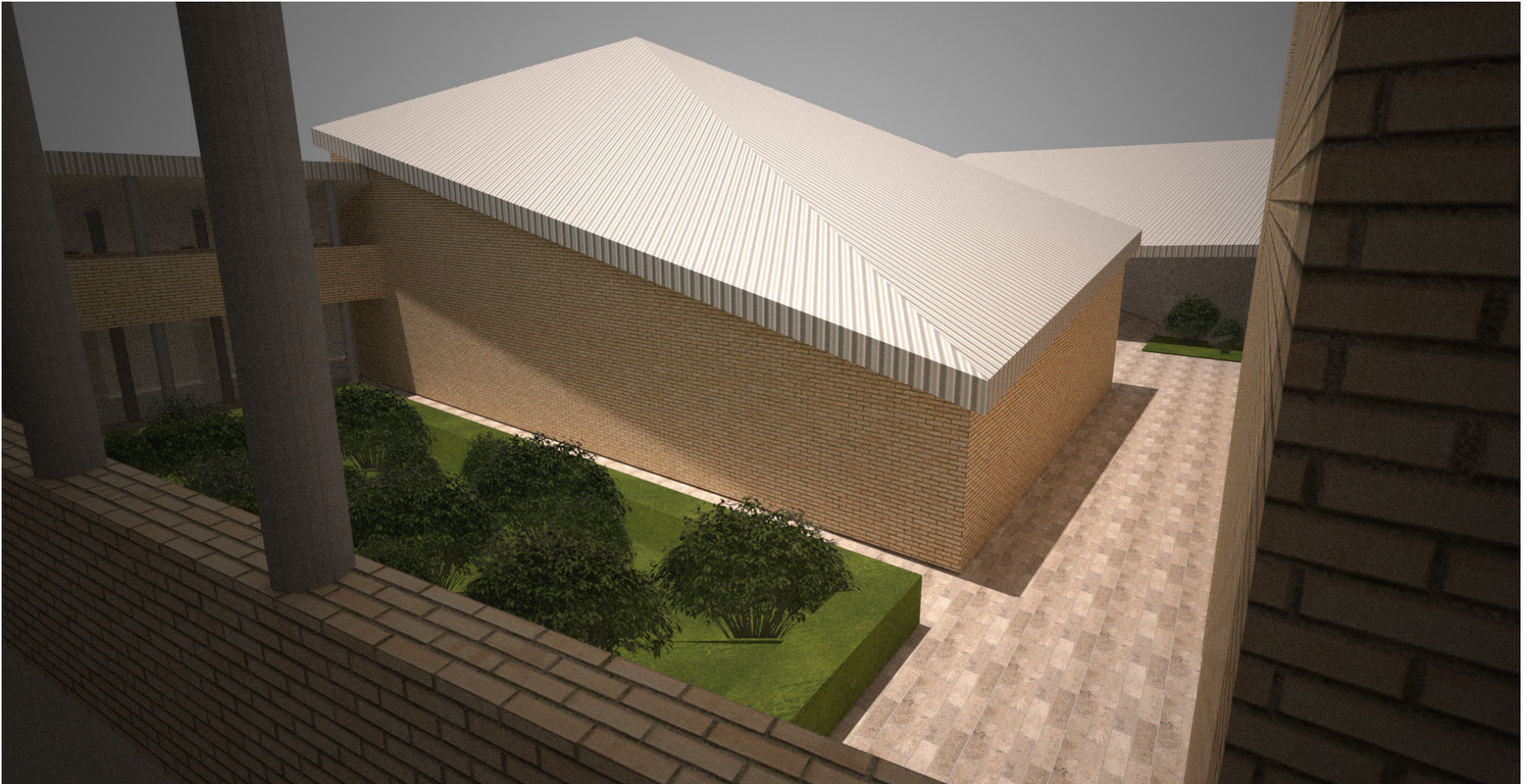


View of courtyard from balcony over the entrance

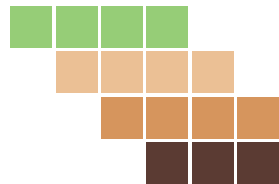




Visualisations



View of courtyard and plaza from library





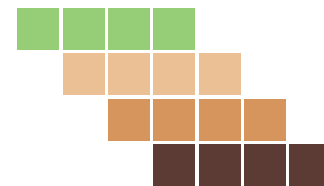
Visualisations



Car park, plaza, education centre and garden (section, looking west)



Accommodation, garden, event hall, plaza and car park (section, looking east)





Contributors

We are grateful to the following contributors for their valuable input to the planning and development of this project.

Costworth Associates

Costworth Associates is a firm of consultant quantity surveyors, project managers, engineering project cost administrators, project auditors, claim consultants and project arbitrators. The firm is registered with all the relevant authorities and has been in practice for over 15 years with clients cutting accross both private and public sectors.

costworthmegaqs@yahoo.com

24 Adeleke Odunuga Street
Harmony Estate
Ifako-Ogba. Lagos

+234 808 055 2480

+234 905 461 4610

Ove Arup & Partners Nigeria Limited

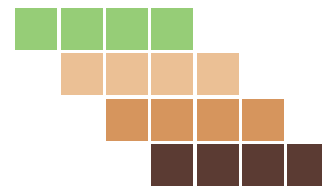
Ove Arup & Partners Nigeria is known within the engineering and construction industry for excellence and innovation. Operating in Nigeria continuously for over 65 years, the firm has been involved in numerous landmark successful projects around the country. Arup has made major contributions to all aspects of civil and structural engineering development in the country and has acquired a database of local engineering conditions and methods of working, enabling it to provide exceptional service geared to meeting the specific project needs within Nigeria.

lagos@arup.com

26 McCarthy Street
Onikan
Lagos

+234 709 812 2956 – 7

www.arup.com





Contact us



tgsamaritanfoundation@gmail.com

United Kingdom

4-16 Deptford Broadway
London, SE8 4HH

+44 (0)20 8609 6500

+44 (0)7877 122 098

Nigeria

27 Alex Kehinde Crescent
Ifako Ijaye, Lagos

+234 806 694 4944

+234 816 548 3206

www.tgsamaritanfoundation.org



studio@coullarchitecture.com

Romer House

132 Lewisham High Street

London SE13 6EE

United Kingdom

+44 (0)20 8609 6550

www.coullarchitecture.com

